

DRIVING INSTRUCTOR TRAINING



 SmartDriving

Driving Instructor Training



- Presentation will last around 1 hour.
Using Zoom - Q&A chat
- We will be emailing a copy of the slides out afterwards.

What we will cover

- Who can become an instructor and what the job involves
- Timeframe to train and DVSA requirements
- The training provided and the qualification process
- Starting your business, franchise package, and car options
- Earning potential
- Course cost and options to pay
- Webinar special offer and intensive course option.
- Q&A Live, contact numbers and emails.

Who we are

- Part of the Watch Learn Drive group
- Smart Driving training driving instructors since 1995
- DRIVE driving school, since 2016 – the fastest growing driving school in the UK
- Over 300 driving instructors currently
- Our course is written by John Farlam
- Over 100 specialist driving instructor trainers
- Nationwide training – delivered locally
- ORDIT registered
- A MULTI-award-winning company with many award-winning training products and services
- We are very proud to have won the Prestige Award for 'Driving School of the Year 2024'



GOLDEN 'L' AWARD WINNERS



Who can become a Driving Instructor?

- Providing you meet the DVSA requirements ANYONE can become a driving instructor.
- Anyone over 21 – NO upper age limit
- Any Nationality – We train and support all nationalities; English does not need to be your first language.
- Any Background - you don't have to have professional driving qualifications or have teaching experience. We train and support everyone.



Why become a Driving Instructor?



- Flexible hours
- Work life balance
- Be your own boss
- Job satisfaction
- Great income
- Job security

Flexible hours

- Lessons can be done at any time
- There is NO on and off peak time
- You control your own diary, days, times area you want to work.
- You can pick your pupil up from college, work, home, anywhere!
- Most instructors do two hour lessons
- Freedom to change and move lessons
- Freedom to grow or wind down work load



Work life balance

- Freedom to fit work into home life and other commitments
- Being available and having control
- Do the school run each day, never miss a sports day or a school play
- Book time out for special occasions and important events
- Able to attend appointments
- Take holidays and days off when you choose



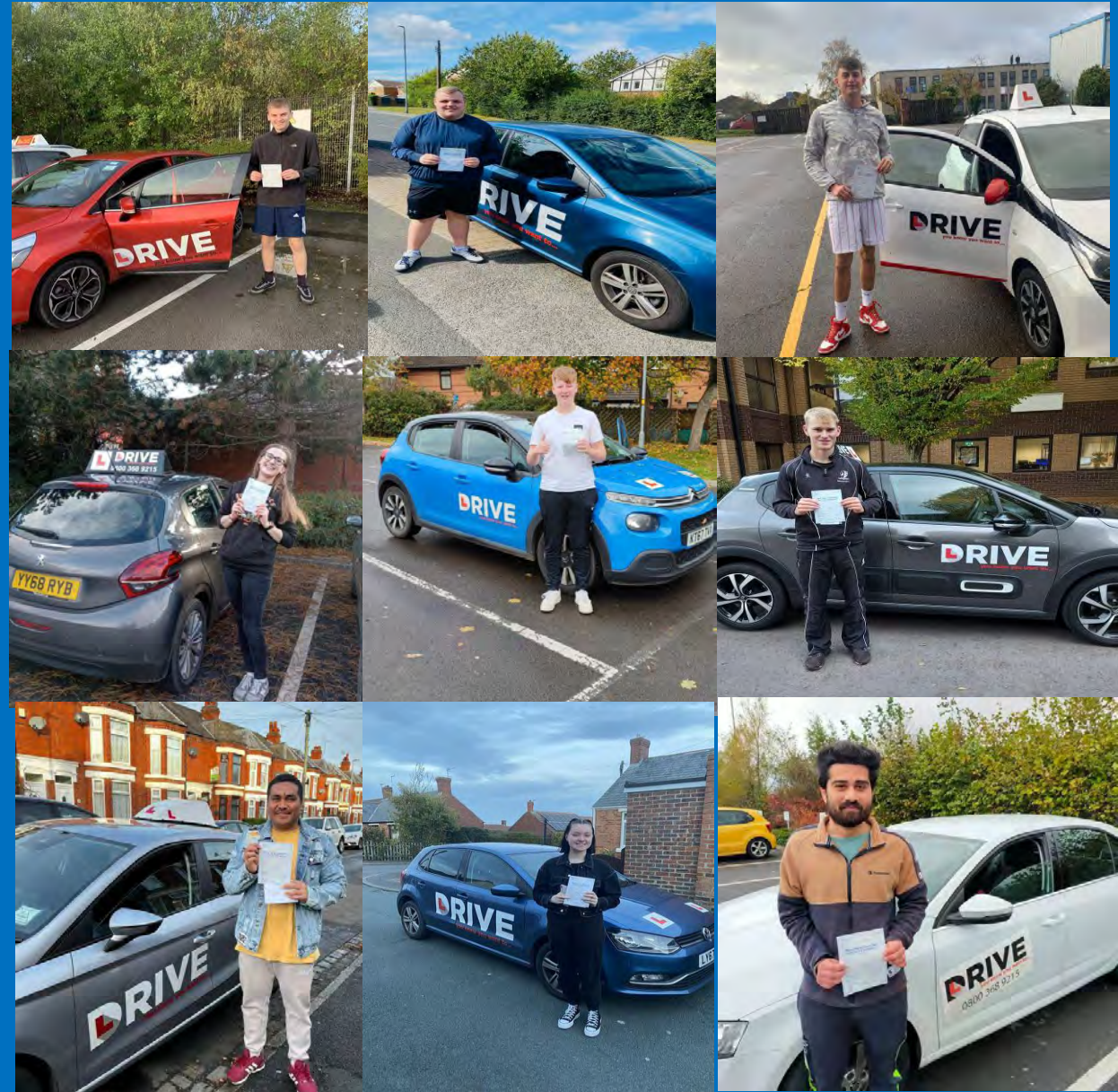
Be your own boss

- Manage how and when you work
- Get out what you put in
- Reputation and word of mouth
- Just you! You do not have to run a team, manage other people or do extra work! Just look after your pupils
- No pressure of deadlines
- Make the decisions and call the shots



Job Satisfaction

- Reward of teaching
- Seeing your pupils grow and develop each week
- Helping them achieve a life goal as huge as passing their driving test
- Teaching important driving and life skills
- Teaching someone who wants to be there and is engaged in the lesson
- Building pupils confidence
- Have fun, have a chat and build a rapport



Great Income

- Driving lessons currently ranging from £35- £45 per hour!
- Most instructors doing at least 2hr lesson slots (£70-£90 per lesson)
- DVSA states it takes approximately 46 hours of professional tuition to reach test standard
- So each new pupil you take on will pay around £1 600 to £2000 to learn to drive with you.
- We guarantee a minimum of 40k in your 1st year of teaching.



Job Security

- The industry urgently needs instructors
- Pupils are waiting from 2 to 6 months to start their lessons
- Instructors switching from 1hr to 2hr.
- Growing as a nation – more people learning each year
- Driving licence required for many jobs
- Transport industry all stems from getting a licence
- Instructors joining but also leaving the register
- Many instructors choose to only work part time or less than full time for work life balance
- Covid bottle neck and backlog



Training

- Flexible training - Around current commitments and/or full-time job
- Training timeframe 4-12 months
- Online training from home
- Virtual classroom at home, sessions run daytime, evenings and weekends
- Full training material and apps included
- Unlimited specialist training support by phone and email
- Local practical training
- Licence can be Automatic or Manual
- 68 hours of practical in car training
- Guaranteed train until pass

➤ The DVSA requirements

- Hold a full UK licence for at least 2.5 years
- Not been disqualified from driving in the last 4 years
- No more than 5 penalty points on licence
- Have a DBS/CRB

(Please chat with us if in Northern Ireland)



Welcome to your ADI course

Our small-chunk learning approach will guide you step-by-step towards career success.
Follow the links on this page to make the journey of a lifetime...



Course Introduction

This introduction offers a brief course overview and some essential information to get you started.

[GO →](#)



Part 1 - Study Units

The foundation for your career as a driving instructor and the first part of your examination.

[GO →](#)



Part 1 - Practise & HPT

Practise multiple-choice questions and Hazard Perception Tests. (Needs authorisation from Training Support)

[GO →](#)



Part 2 - Advanced Driving

Preparation for your driving assessment, training and test. In this course you will learn and master the advanced driving skills you need.

[GO →](#)



Part 3 - Core Teaching Skills

Essential preparation for Part-Three training. This course will help you to get maximum value from your in-car teacher training.

[GO →](#)



Trainee Licence

Information to guide you through your first lessons with 'live' learner drivers. Our guides, tips and advice will help to drive your success.

[GO →](#)

DRIVE / SmartDriving – The UK's Leading Driver & Instructors Training Organisation

Our award-winning content, support, and training will help ensure a smooth journey to qualification. And after you pass, our £40,000 guarantee will give you the best possible start to your new career.

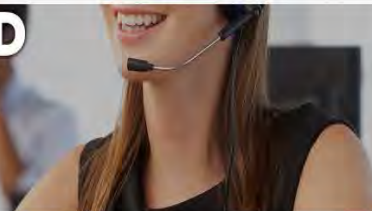
USEFUL 'HOW TO' & 'FAQs' VIDEOS



Quick Answers...

Our 'How To' videos will help you navigate the course and answer common questions about DVSA Registration, exam applications, and more.

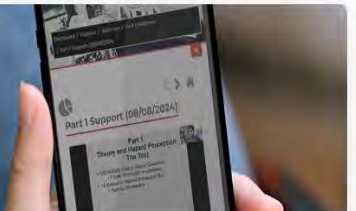
UNLIMITED TRAINING SUPPORT



Here to help...

Support is on hand whenever you need it. Our expert team can assist with course queries, test bookings, training questions, and anything else that you might need.

USEFUL WEBINAR CLASSES



Boost your training...

The webinar area offers recorded webinars covering all driver training topics. The recordings, which can be accessed at any time, will help boost your core training.

Part One Test

Theory and hazard perception

Test

- Multiple choice questions
- Hazard perception test
- Unlimited attempts
- Test fee £81 paid directly to DVSA

Our Training

- 2 x Online Theory Training Sessions - with trainer
- Online training platform
- Unlimited specialist support by phone and email
- App, books, and materials supplied
- Mock tests, PDI surgeries, Facebook group

Part Two Test

Driving Ability test



Our Training

- Online preparation via online platform
 - Video clips and guides of current standard
 - Practice exercises
 - 2 x half day (4 hours each) in car face to face specialist training sessions
 - Full report after each session
 - Unlimited training support by phone and email
 - Automatic and Manual training
-
- DVSA allow 3 attempts at test
 - Test fee £111 paid directly to DVSA

Part Three Training (40hrs face to face training)

Instructor Ability – how to teach a pupil

- Online preparation via online platform
- Video clips of lessons being delivered & explained
- Practice exercises
- 8 x half day specialist in car face to face training sessions(32hrs)
- Full report after each in car session
- Unlimited virtual classroom sessions (8hrs minimum)
- Unlimited training support by phone and email
- DVSA allow 3 attempts at test - Test fee £111 paid directly to DVSA



Trainee Licence - PDI licence fee £140 (pink badge)

After 40 hrs of part 3 training

Start to teach

- Start teaching **real** pupils, work as much or as little as you choose.
- Start earning – charge full price for every lesson
- Transition & build your business around your current job, grow and increase the workload at your pace.
- Unlimited additional training (20 hours of minimum legal requirement)
- You **MUST** be sponsored by a driving school or ADI to start on a trainee licence – DRIVE GUARANTEED TO SPONSOR ALL OF OUR TRAINEES.
- Gain the necessary 'on the job' experience to take and pass part 3 test
- Choose a pupil you are currently teaching and take them for the test
- Replace your weekly training session with real paid lessons. Teaching just 4hrs will earn £140 - £180 p/w
- Teaching 20hrs will earn £700!

Franchise Fee

£99 p/w (£250 one-off admin fee)

- Pupils – We will supply your pupils. No finder's fee, No commission, No additional charges
- Call centre for bookings – lessons pre-paid and pre booked 4 to 8 weeks in advance
- The lessons are typically booked in blocks of 10-20hrs
- DRIVE App – diary management and online payment system
- Accounts and bookkeeping support
- Marketing, advertising, website and social media
- DRIVE Brand clothing and accessories
- DRIVE learner driver app – assist pupils with their practical lessons
- Free Business start-up course, ongoing business management support and mentoring
- Standards check training & CPD training
- Car Signwriting
- Guaranteed minimum £40,000 after our fees, in year one
- Training fees back in year 2
- Franchise-free year 3 (ongoing from then onwards)
- 12-month minimum term

Car options



Own vehicle - £0 (already funded)

- Most people already have a suitable car
- Dual controls
- Insurance partners

Buy options – from £30 p/w

- Ex-lease cars fitted with dual controls
- New car packages from dealership
- Second hand private sale
- ADI forums – car sales

Fully expensed car – from £120 p/w

- We can arrange this for you
- Fully insured for personal and business use
- Fully serviced & maintained (inc. tyres)
- Breakdown cover & replacement car

Earning potential

40 hours @ £35 per hour

Total = £1400

Deductions –

Car package £80

Fuel £100

Franchise fee £99

Total after deductions

£1121 per week

£4857 per month

£58,292 per year

20 hours @ £35 per hour

Total = £700

Deductions –

Car package £80

Fuel £50

Franchise fee £99

Total after deductions

£471 per week

£2041 per month

£24,492 per year



Enrol by Monday 30th June

Train for JUST £1899 (normally £2399 – save £500)



- Spread the cost - 0% finance over 12 months or in house payment plan.
- Pay in full £1699 and save a further £200
- Guaranteed train until pass or money back
- Guaranteed position with DRIVE
- Guaranteed minimum income of £40,000 after our fees
- Market leading course, full career training, unlimited support and mentoring, ongoing careers package



GOLDEN 'L' AWARD WINNERS



- Intensive option - (normally £2899)

SAVE £500 on intensive training. Pay just £2399 on finance or £2199 in full (places strictly limited)

Webinar Special – Enrol by Monday 30th June

TEST FEES BACK

Once qualified we will refund in CASH your test DVSA fees. Up to the value of £303.

TRAINEE LICENCE PAID

We will pay your trainee licence fee
- Save £140



QUESTIONS?

Smart Driving

Dave Hamilton – 07540 400 573
0800 09 88 321 (option 1)
recruitment@smartdriving.co.uk

DRIVE

Vicky Walker – 07415 688 305
0800 368 8193 (option 1)
recruitment@trainwithdrive.co.uk

Driving lessons:
www.just-drive.co.uk

